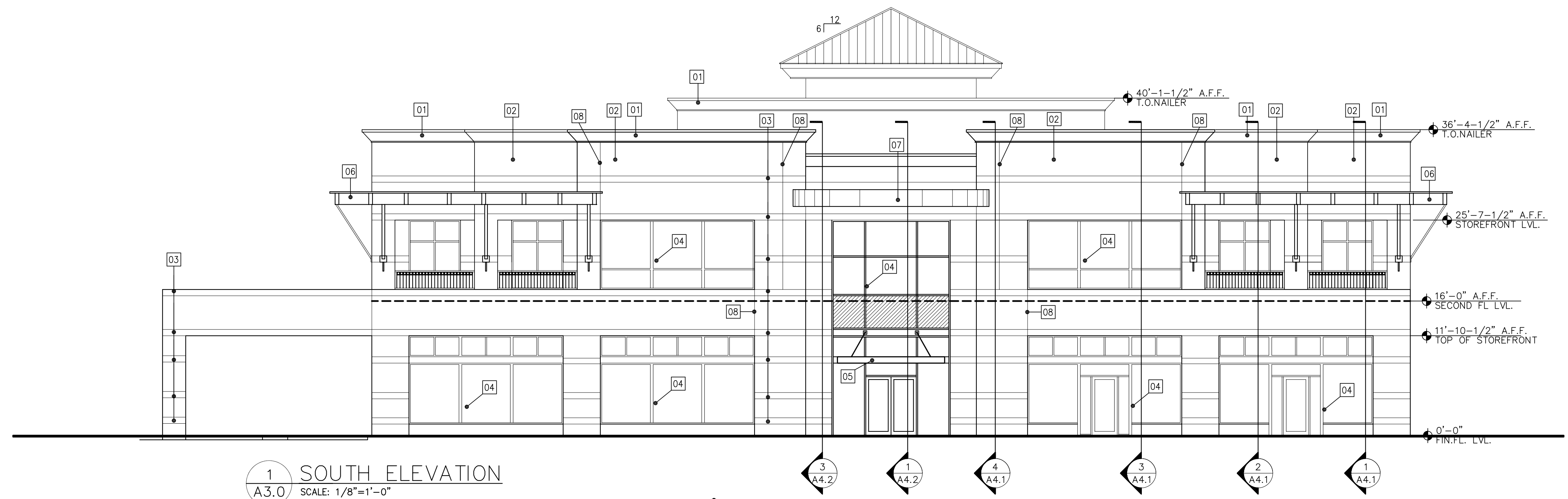
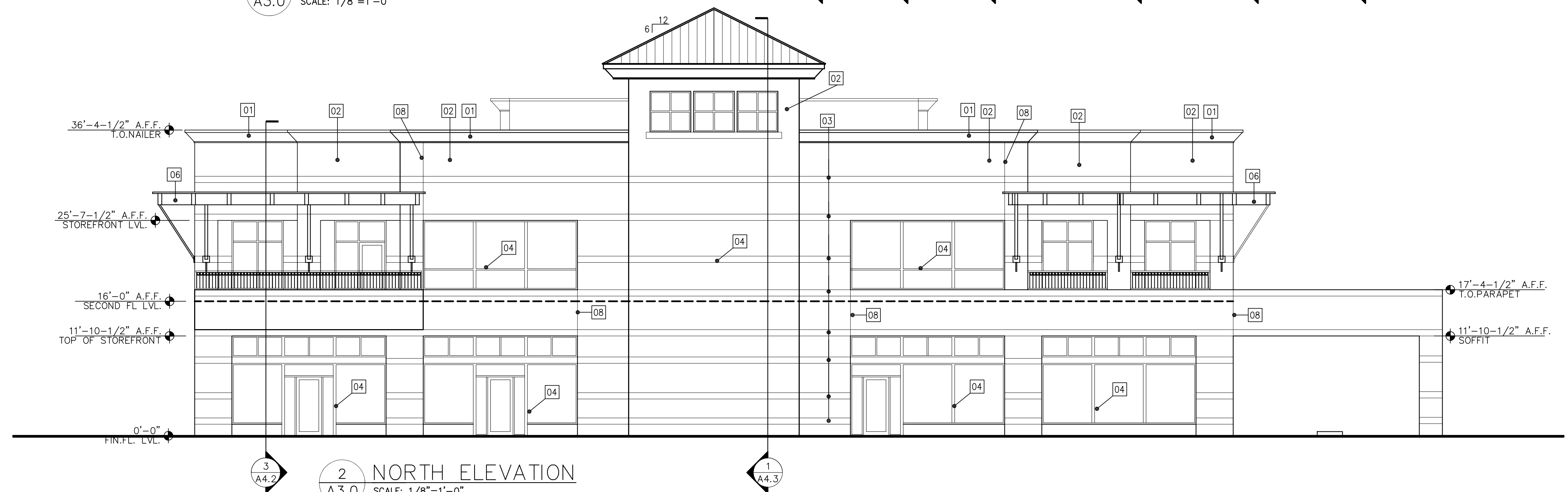


MATERIALS KEY	
01	ACRYLIC FINISH ON FOAM CORNICE (DRI-VIT COLOR #)
02	KING SIZE FACE BRICK (COLOR-1) AS PER SPECS
03	KING SIZE FACE BRICK (COLOR-2) AS PER SPECS
04	CLEAR ANODIZED ALUMINUM STOREFRONT W/ 1" INSULATED LIGHT TINTED GLASS
05	METAL AWNING WITH HANG RODS (COLOR)
06	METAL TRELLIS AWNING
07	SPECIAL AWNING AS/DETAIL
08	CONTROL JOINT IN MASONRY
09	STANDING SEAM METAL ROOF (COLOR-)
10	1" INSULATED SPANDREL GLASS
11	SPECIAL BULLET PROOF WINDOW BY DIEBOLD
12	PAINTED METAL RAILING

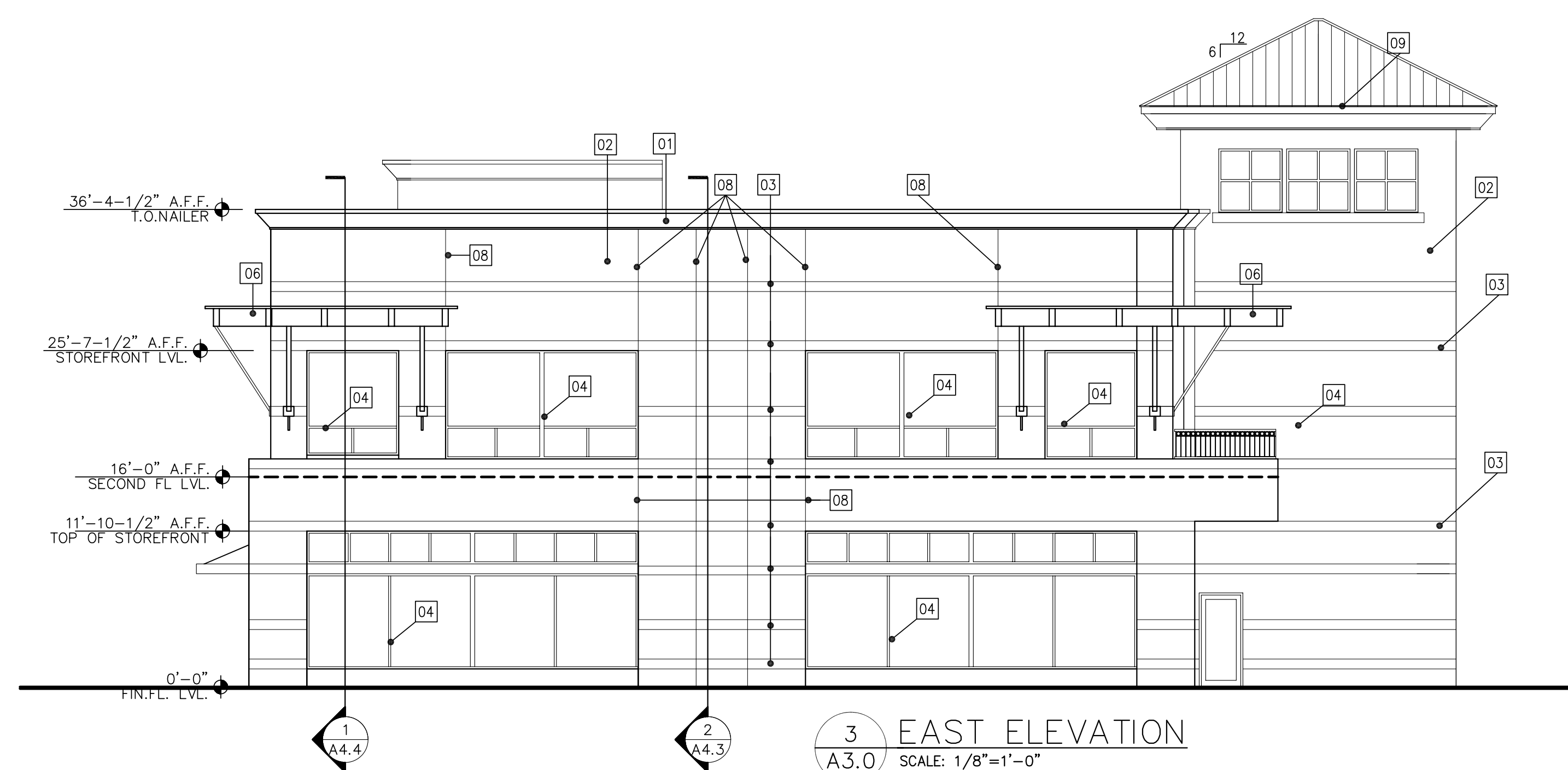
NOTE: PROVIDE PLYWOOD IN LIEU OF SHEATHING BEHIND SIGANCE AREAS



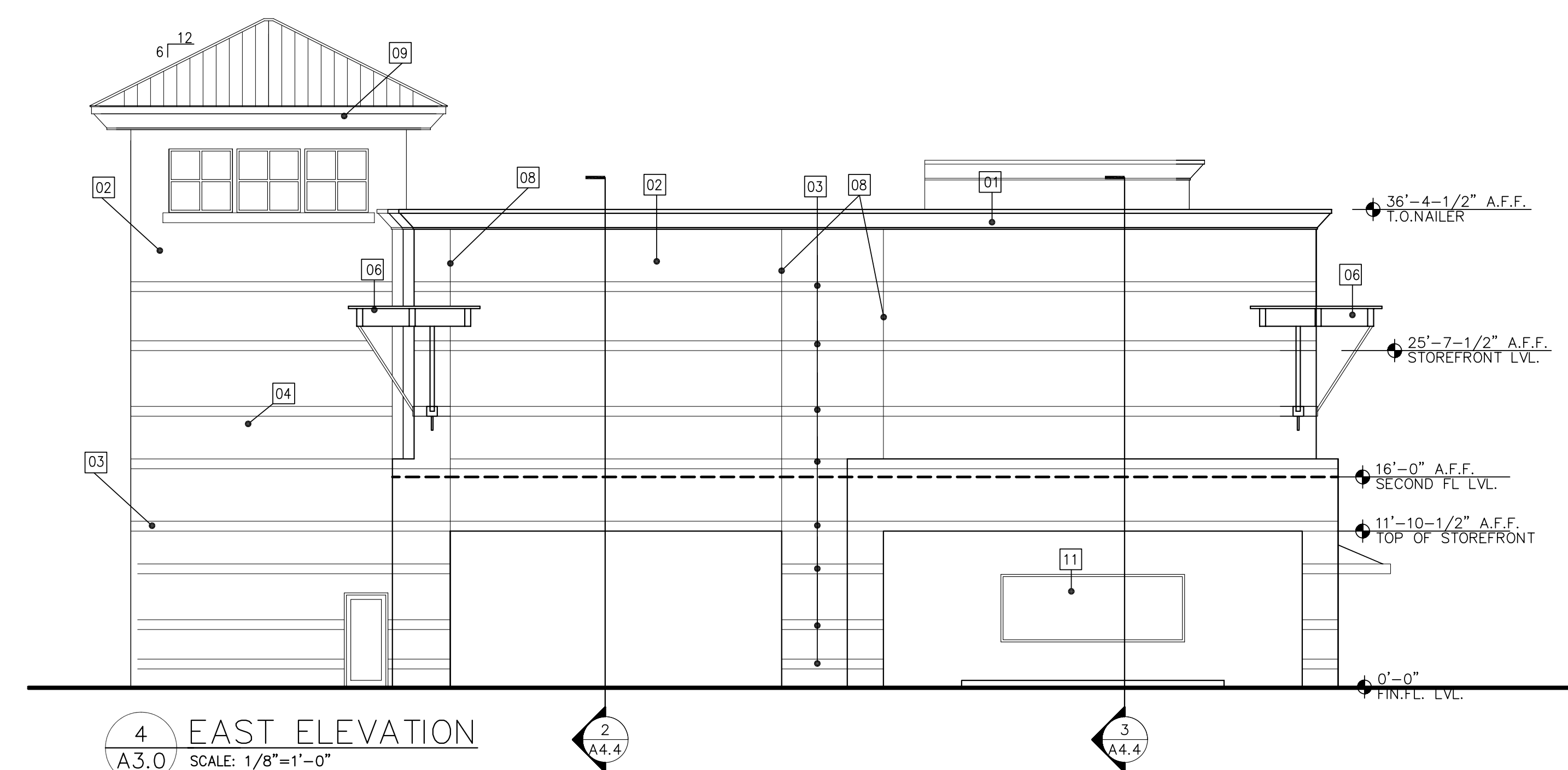
1 SOUTH ELEVATION
 A3.0 SCALE: 1/8"=1'-0"



2 NORTH ELEVATION
 A3.0 SCALE: 1/8"=1'-0"



3 EAST ELEVATION
 A3.0 SCALE: 1/8"=1'-0"



4 EAST ELEVATION
 A3.0 SCALE: 1/8"=1'-0"

MIXED USE BUILDING
 2200 WEST 7TH STREET, FORT WORTH, TEXAS 76107

PRELIMINARY
 NOT FOR
 CONSTRUCTION

ROBERT W. KELLY
 ARCHITECT INC.
 100 SOUTH MAIN STREET
 FORT WORTH, TEXAS 76104
 817-332-5014 FAX: 817-332-8570

SHEET NO.
A3.0
 OF